



Current Conditions & Future Decisions

*Presented by the Becket Open Space and Recreation Advisory Committee
April 4, 2022*

Welcome



Our purpose: Update the 2006 Open Space and Recreation Plan to create a blueprint to balance future development & conservation



Bonus: The plan will increase Becket's eligibility for state grants



Tonight: The purpose for tonight's meeting is to learn about what you think Becket should look like in 20 years

What's Next?

If you haven't already, add your email address to the sign in sheet to stay updated!



What do you want Becket to be like in 20 years?



Suggestions to meet the open space and recreational needs that you indicated.



What conservation / preservation looks like to YOU!

A scenic landscape photograph of a lake. In the foreground, a dark wooden fence runs diagonally across the frame. The ground is covered with dry grass and scattered rocks. A paved path leads towards the water. The lake is calm, reflecting the sky. The far shore is lined with a dense forest of trees, some of which are bare, suggesting a late autumn or winter setting. The sky is blue with scattered white clouds.

What is open space?





Town of Becket

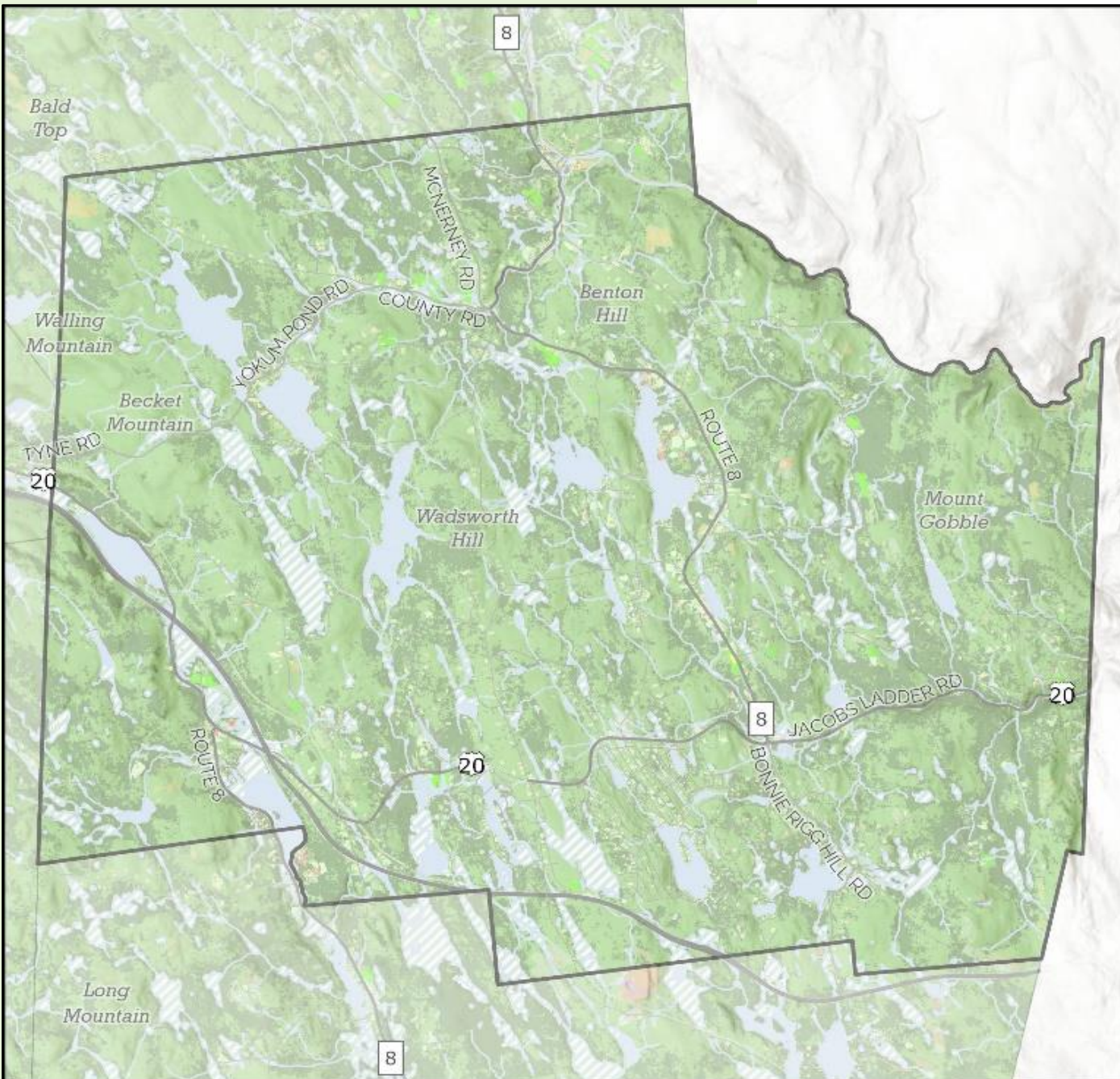
Land Use

- Bare Land
- Cultivated
- Deciduous Forest
- Developed Open Space
- Evergreen Forest
- Grassland
- Commercial
- Industrial
- Mixed use, other
- Mixed use, primarily residential
- Other impervious
- Residential - multi-family
- Residential - single family
- Right Of Way
- Pasture/Hay
- Scrub/Shrub



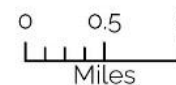
BRPC
Berkshire Regional Planning Commission

This map was created by the Berkshire Regional Planning Commission and is intended for general planning purposes only. This map shall not be used for engineering, survey, legal, or regulatory purposes. MassGIS, MassDOT, BRPC or the municipality may have supplied portions of this data.



Town of Becket Vegetation

-  NHESP Priority Conservation Areas
-  BioMap2 Core Habitat
-  Natural Communities
-  Forest
-  Agriculture
-  Towns



This map was created by the Berkshire Regional Planning Commission and is intended for general planning purposes only. This map shall not be used for engineering, survey, legal, or regulatory purposes. MassGIS, MassDOT, BRPC or the municipality may have supplied portions of this data.



Significant Natural Resources

Becket at a Glance

- Total Area: 30,587 acres (47.8 square miles)
- Human Population in 2010: 1,779
- Open space|protected in perpetuity: 5,082 acres, or 16.6% percent of total area*
- BioMap2 Core Habitat: 2,143 acres
- BioMap2 Core Habitat Protected: 1,334 acres or 62.2%
- BioMap2 Critical Natural Landscape: 16,678 acres
- BioMap2 Critical Natural Landscape Protected: 4,183 acres or 25.1%.

BioMap2 Components

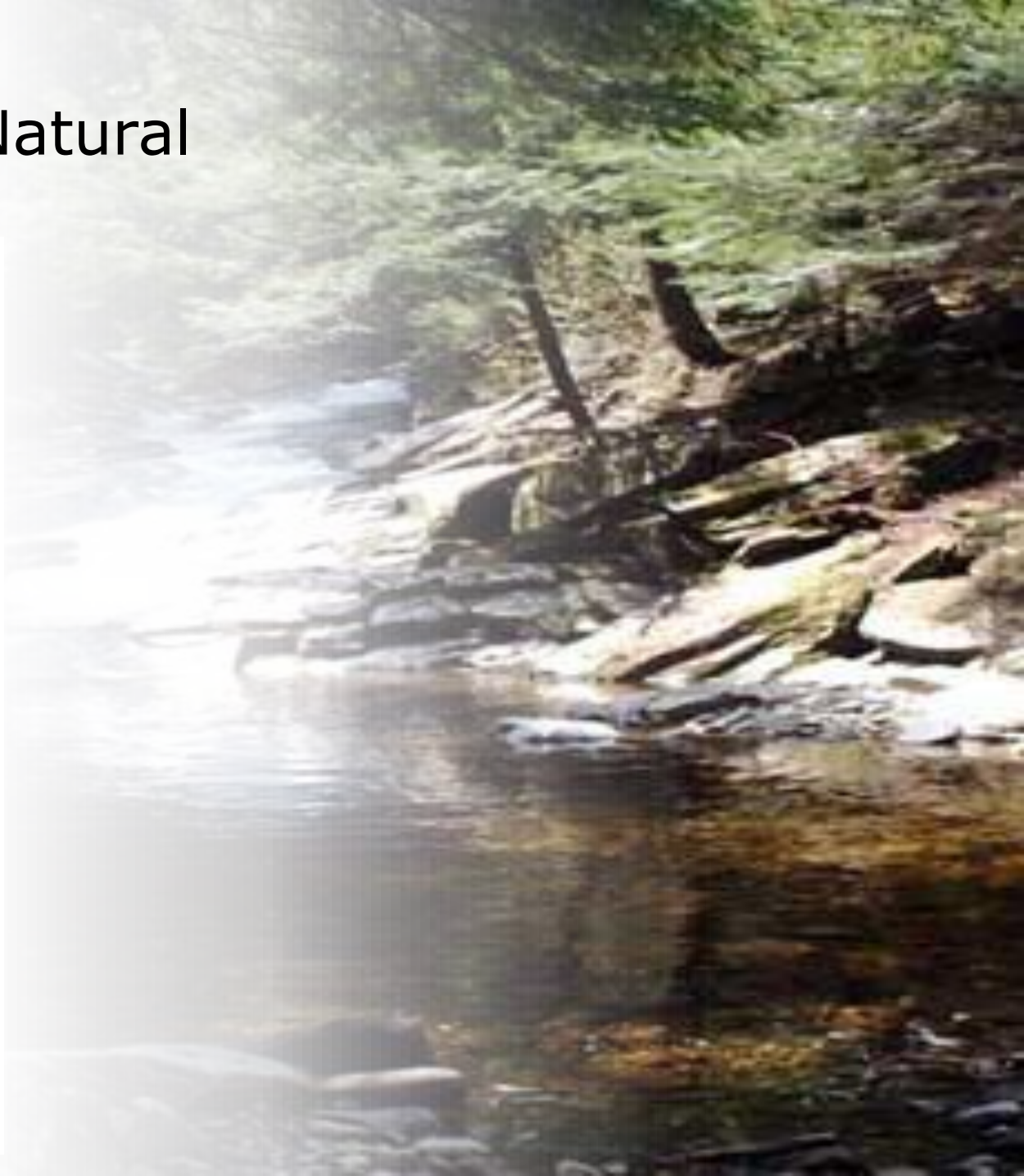
Core Habitat

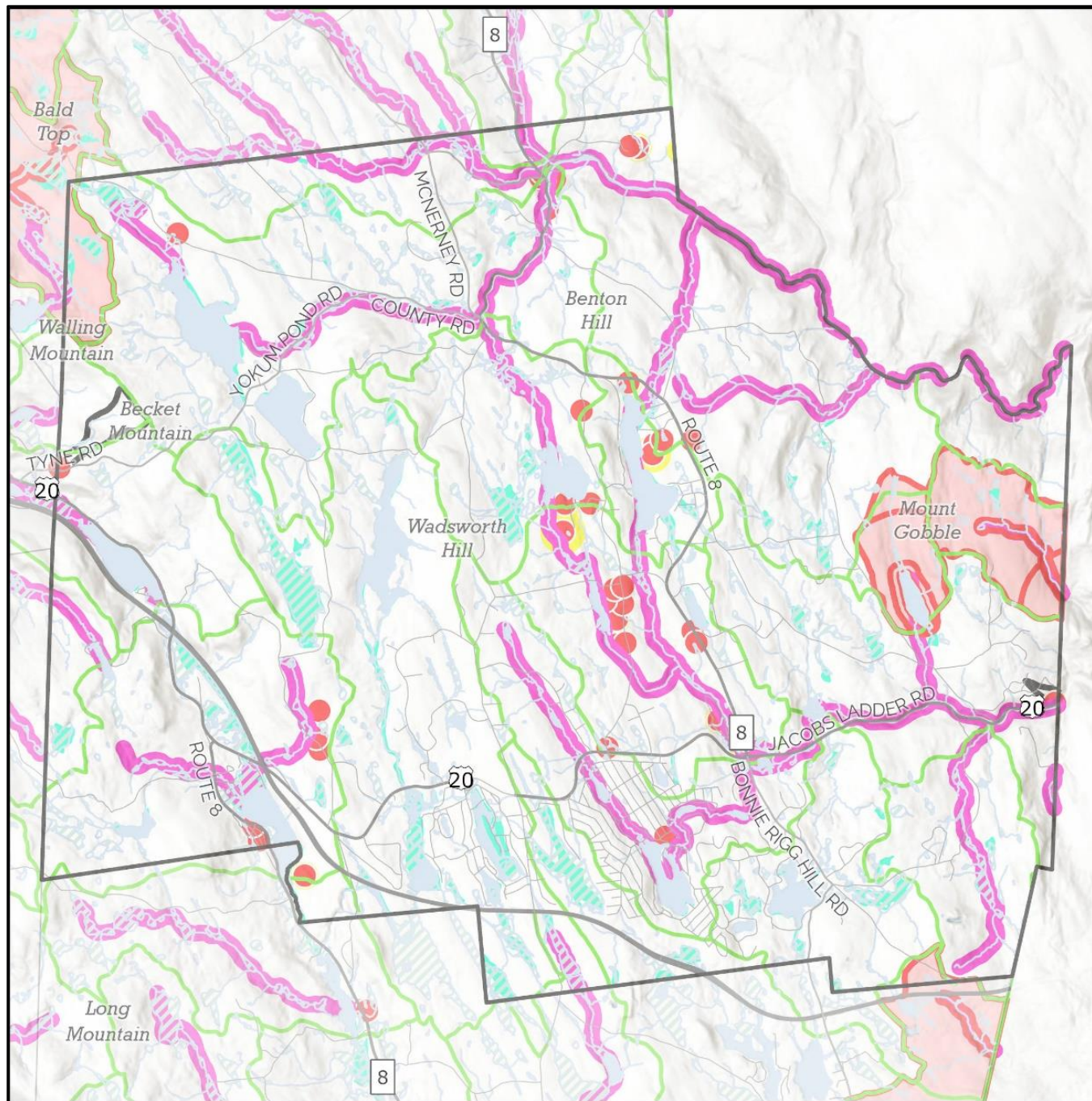
- 1 Exemplary or Priority Natural Community
- 2 Forest Cores
- 8 Wetland Cores
- 5 Aquatic Cores
- 7 Species of Conservation Concern Cores**
 - 1 bird, 1 reptile, 2 fishes, 2 insects, 3 plants

Critical Natural Landscape

- 5 Landscape Blocks
- 7 Wetland Core Buffers
- 5 Aquatic Core Buffers

* Calculated using MassGIS data layer "Protected and Recreational Open Space— March, 2012".





Town of Becket Water Features

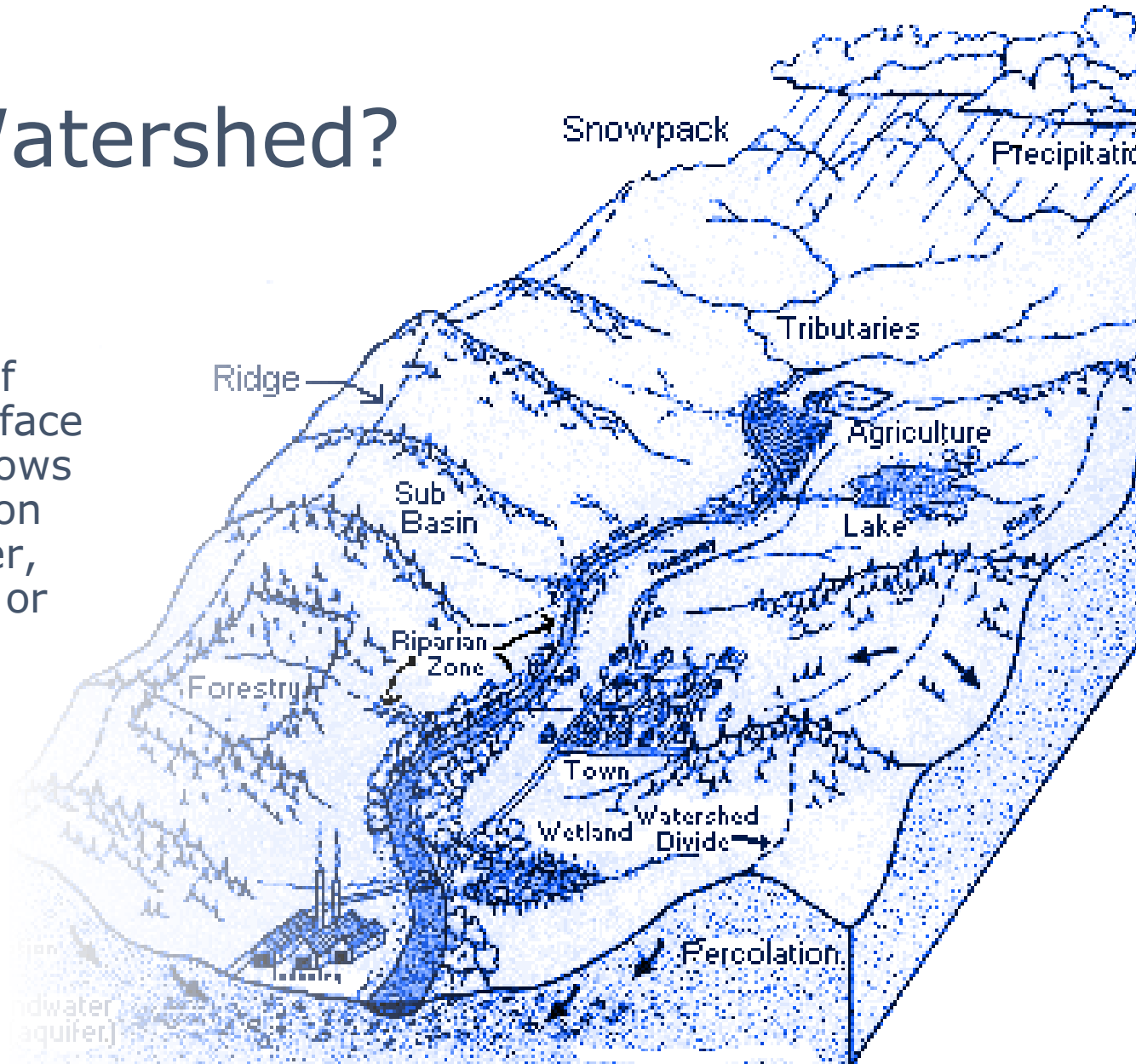
- ▬ Subwatersheds
- ▬ Surface Water Protection Zone
- ▬ Cold Water Fisheries
- Public Water Supply
- Interim Wellhead Protection Area
- Water Supply Zone II
- ▬ FEMA 100yr Floodplain
- ▬ Medium-Yield Aquifers
- ▬ Outstanding Resource Watershed



This map was created by the Berkshire Regional Planning Commission and is intended for general planning purposes only. This map shall not be used for engineering, survey, legal, or regulatory purposes. MassGIS, MassDOT, BRPC or the municipality may have supplied portions of this data.

What is a Watershed?

- A geographic area of land in which all surface and ground water flows downhill to a common point, such as a river, stream, pond, lake, or wetland.



Produced by Lane Council of Governments

Recreational Opportunities

- Many public lakes & ponds
- State-owned lands
 - Trails
 - Water sports
 - Hunting & fishing
- Appalachian Trail
- Becket Historic Quarry and Forest
- Playing fields, playgrounds, Town beach



Deed Restrictions

A legally binding restriction on the use, activity, and/or limitation of property rights, recorded at the registry of deeds.

Property ownership is retained.

EX) Agricultural Preservation
Restriction

EX) Conservation Restriction

EX) Forest Legacy

Purpose	Program	Eligibility	Tax Assessment
Timber production	Chapter 61	Min. 10 acres	5% fair market value
Agriculture	Chapter 61A	Min. 5 acres, min. annual gross sales \$500	"Agricultural" assessment, commercial rate
Recreation	Chapter 61B	Min 5 acres	Min. 25% fair market value, commercial rate

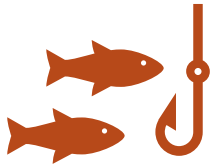
Chapter 61 Tax Program

- Tax abatement program to ease burden of owning large open tracts of land
- Allows the town 120-day *Right of First Refusal*

Community Preservation Act (CPA)

- Surcharge on tax bill (not on property value)
- Currently at 1.5%
- Three focus areas
 - Open space and recreation
 - Historic buildings and landscapes
 - Affordable housing
- Minimum of 10% of annual revenues - dedicated to each focus area
- Remaining 70% allocated as Town sees fit

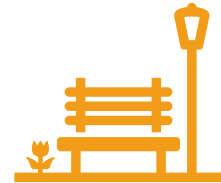
Existing Goals



Water quality is of a dependable high quality for drinking, swimming and fishing.



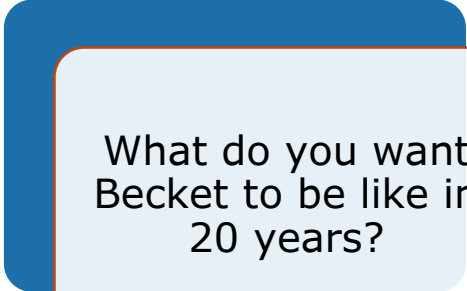
Becket's rural landscape consists of forests and farms amidst ponds, streams and mountains.



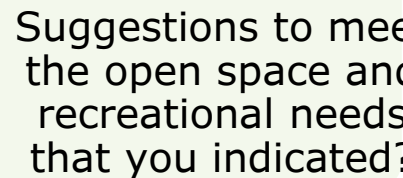
Becket's recreational opportunities to serve all ages, abilities and interests of residents.

We Want to Hear from You:

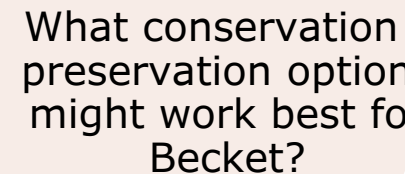
surveymonkey.com/r/becket2022



What do you want
Becket to be like in
20 years?



Suggestions to meet
the open space and
recreational needs
that you indicated?



What conservation /
preservation options
might work best for
Becket?

Contact the
Open Space
& Recreation
Advisory
Committee

Meredyth
Babcock

Mike
Lavery

Al Blake

Larisa
Shpitalnik

Cindy
Delpapa

Ken
Smith